

The slide features a dark blue background with decorative geometric patterns on the left and right sides. These patterns consist of overlapping, chevron-like shapes in yellow, magenta, cyan, and grey, pointing towards the center. The main text is centered in the upper half of the slide.

Tints & Shades

Hot Air Balloons

Lesson Objective:

Within the element of art that is color, tints & shades are important principles to remember and use when creating art, expressing yourself and exploring tones with color.

Success Criteria:

Second Grade Students create their own hot-air balloon drawing - filled with patterns and designs - ready to fill in with tints and shades of a color.

The slide features a solid blue background. On the left and right sides, there are decorative patterns of overlapping, chevron-like shapes in yellow, magenta, cyan, and grey. The text is centered in the middle of the slide.

A Tint:

Is Adding White to lighten a color

The slide features a dark blue background with decorative geometric patterns on the left and right sides. These patterns consist of overlapping, stylized arrow-like shapes in yellow, magenta, cyan, and grey, pointing towards the center. The text is centered in the middle of the slide.

A Shade:

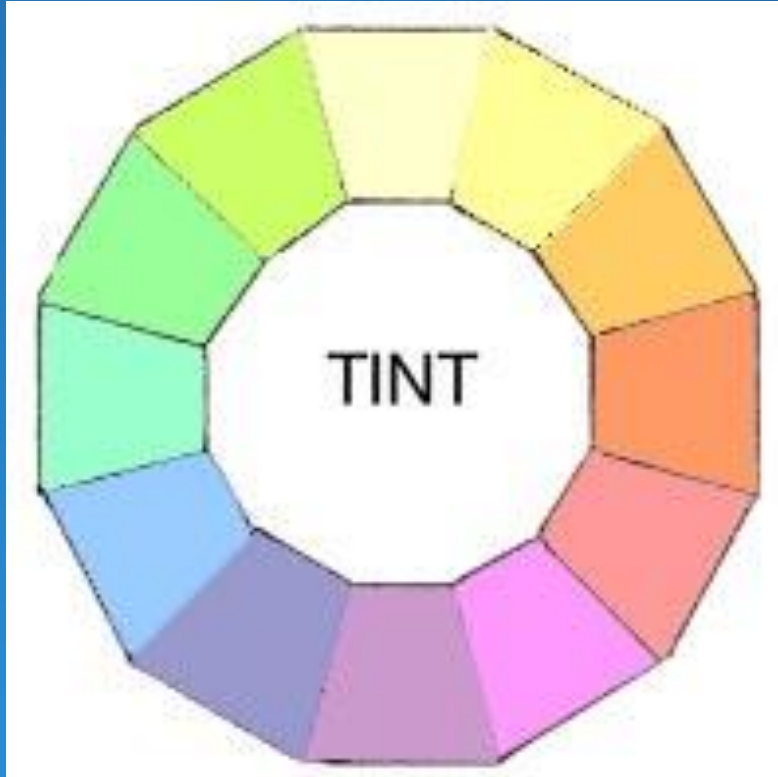
Is Adding Black to darken a color

The slide features a dark blue background with decorative geometric patterns on the left and right sides. These patterns consist of overlapping, chevron-like shapes in yellow, magenta, cyan, and grey, creating a sense of depth and movement.

Tone:

The relative lightness and darkness of a color, drawing or painting.

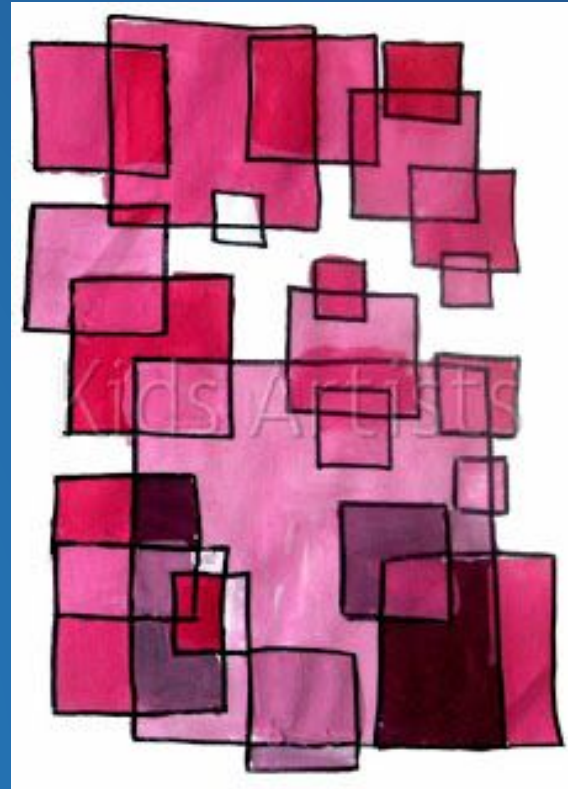
Examples:



Lots of detail for lots of practice!



Lots of detail for lots of practice!



Our Project



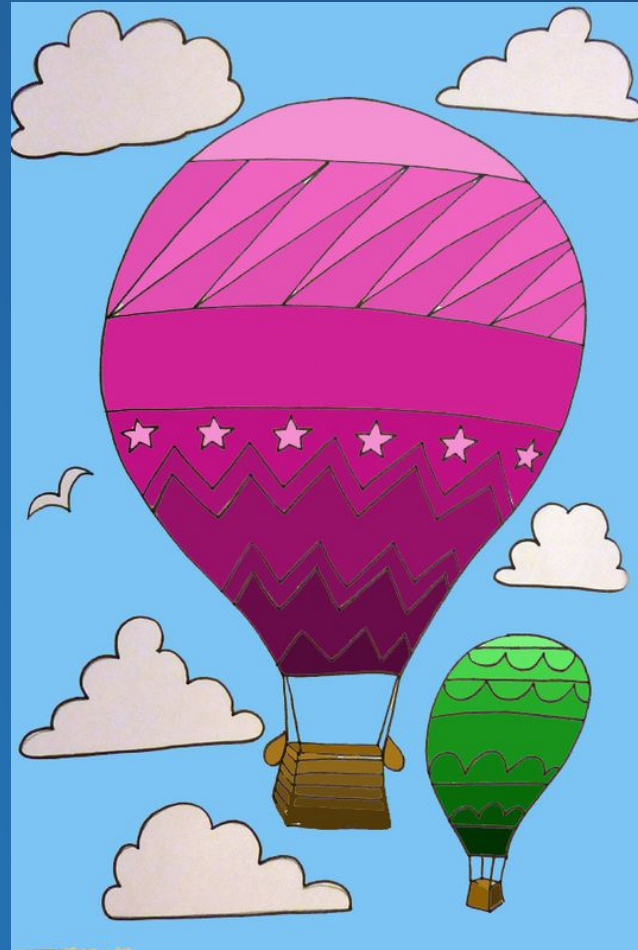
We will start:

By drawing a hot air balloon floating through the clouds.



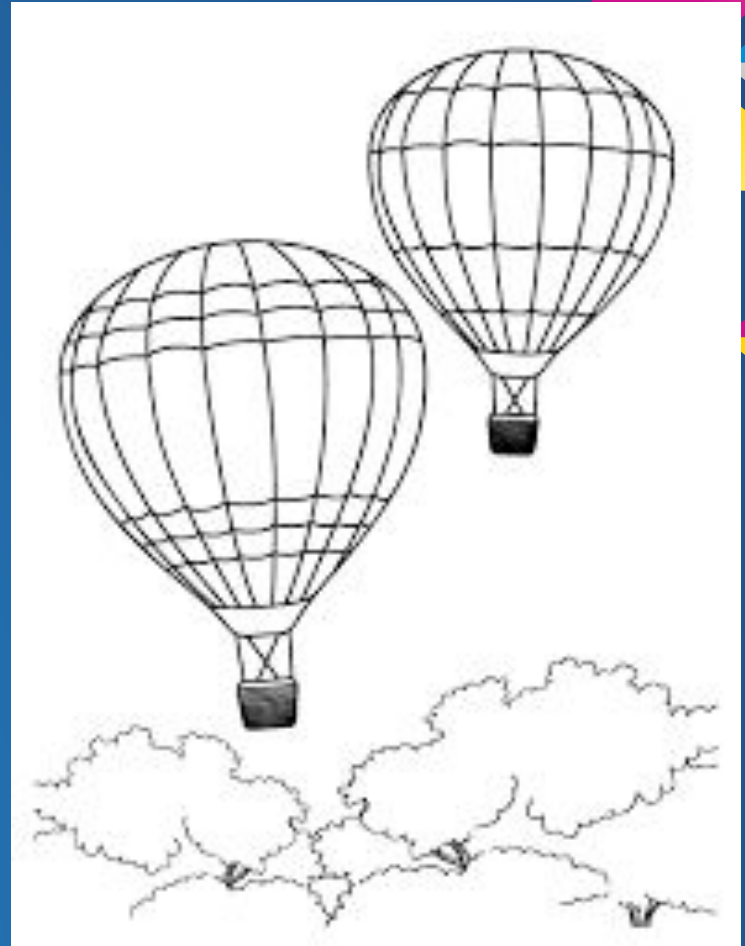
Try:

To have different patterns and shapes so your balloon can be filled with lots of interesting colors and designs.



Next:

We will use sharpies to outline our drawings.



More Examples:



More Examples:

